

**DANILO RAMAZZOTTI®**  
ITALIANHOUSEFLOOR

---

**#CERAMICHE**

Handmade in Italy



Indice  
*Index*

---

Patchwork	04
Fusion Batllò	12
Patchwork MO.DE.	20
Neutra	26
Inchiostro Simpatico	28

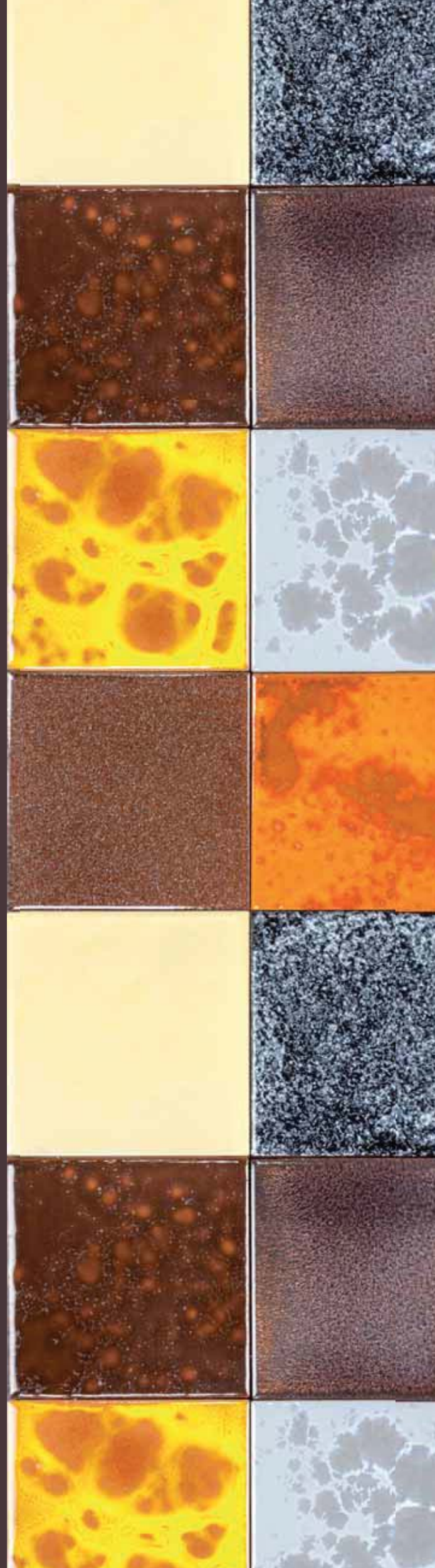
# PATCHWORK

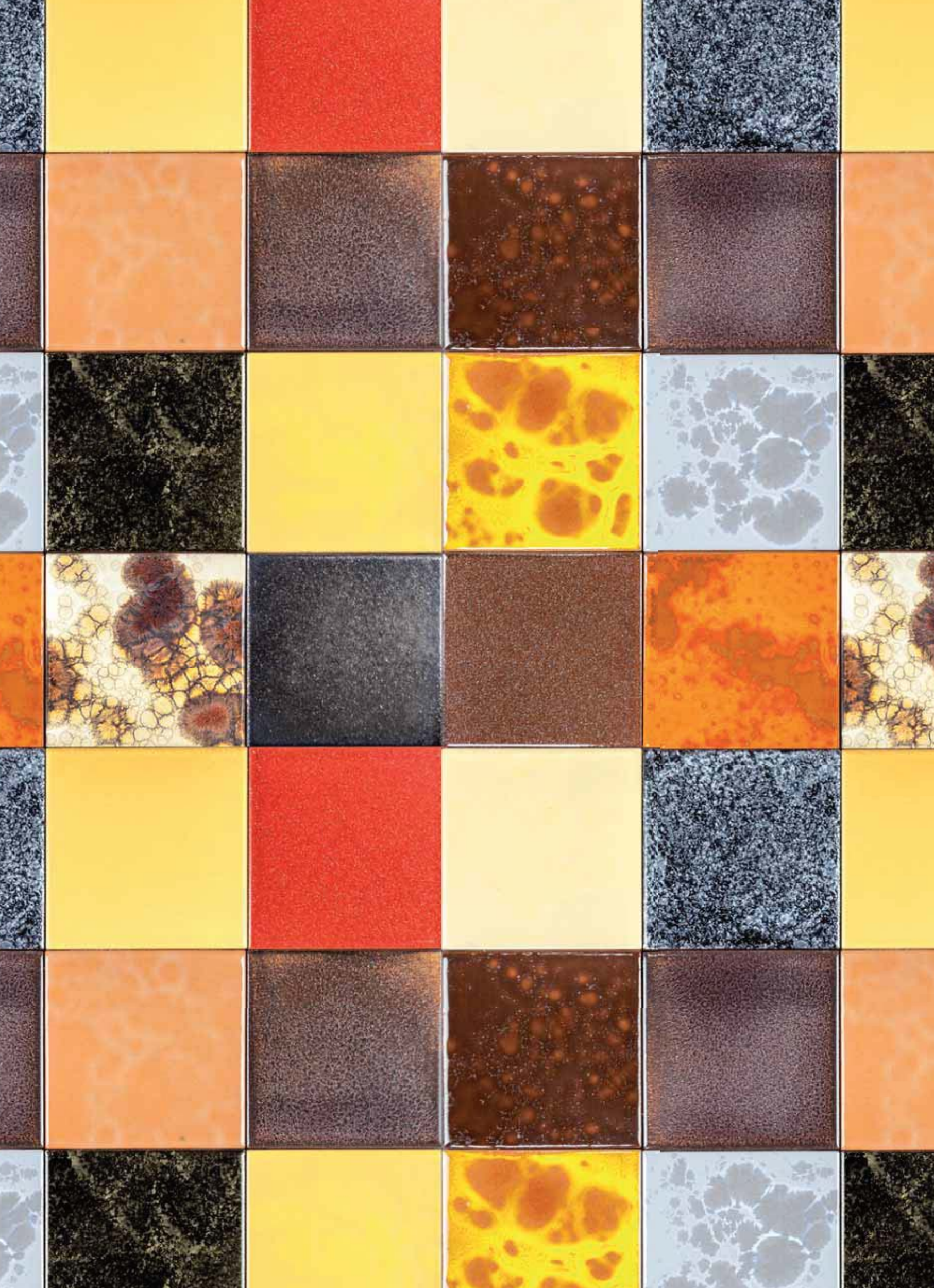
Patchwork rappresenta una riflessione progettuale di unione di effetti ceramici intensi, differenti e materiali in moduli rigorosamente ripetuti, dove il formato si perde visivamente con le fughe. Il risultato è una collezione parietale ad immagini complesse e non della classica formula. Le miscele e colori che compongono la gamma prodotti hanno abitualmente differenti, per caratterizzare diversi canoni architettonici. Con Patchwork non abbiamo voluto creare una collezione identificata in uno stile ma proporre diverse espressioni stilistiche che vanno dal MO. DE., alle colorate e ton su ton. Per assemblare la serie Patchwork sono state utilizzate le collezioni Fusione Batlò, Elementi Scintillanti. Tali collezioni rappresentano la materia, la struttura, il colore e la brillantezza necessari e ad unificare l'insieme cromatico.

*It's a design reflection about the union of intense ceramic effects, different forms and materials in strictly repeated modules, where the format gets visually lost with the grout lines. The result of what you see is an overall wall picture rather than the single tile.*

*The mixtures of color composing the product range have deliberately been combined differently, to characterize different architectural styles. With Patchwork we wanted to create a collection that did not identify itself into a single style but suggested different stylistic expressions, from colorful effects to plain color. To assemble the Patchwork series we used Fusione Batlò and Elementi Scintillanti collections. These collections represent the raw material, the structure, the color and the brightness necessary to unify the chromatic whole.*

Studio D.R.I.H.F.







#nero metallo



#patchwork #interior #design #project #mosaic #artistic

Studio D.R.I.H.F.

# #PATCHWORK



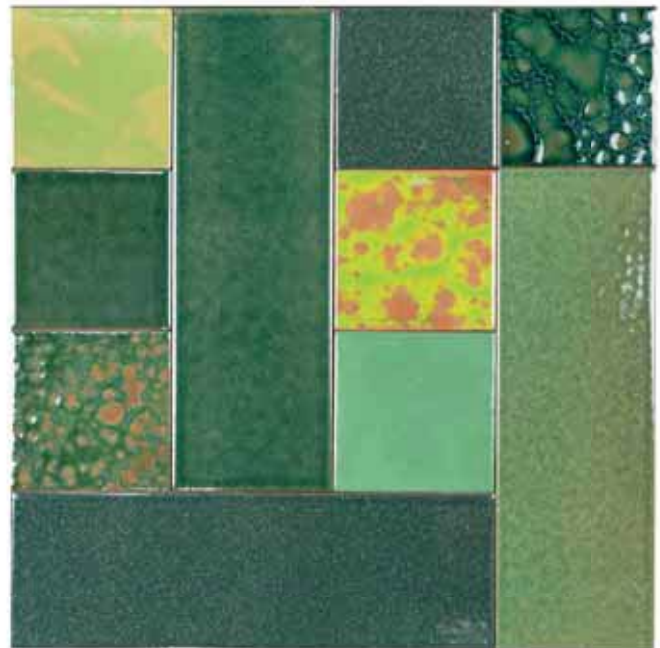
cod. PA 1  
bi anco



cod. PA 2  
rosso/nero



cod. PA 3  
nero metal l o



cod. PA 4  
verde

#DESIGN: studio D. R. I. H. F.  
 #PRODUZIONE/PRODUCTION: artigianale / handmade  
 #MATERIALE/MATERIAL: biscotto meccanico smaltato a mano / mechanical handmade mould glazed  
 #SPESSORE/THICKNESS: 1 cm nominal / nominal

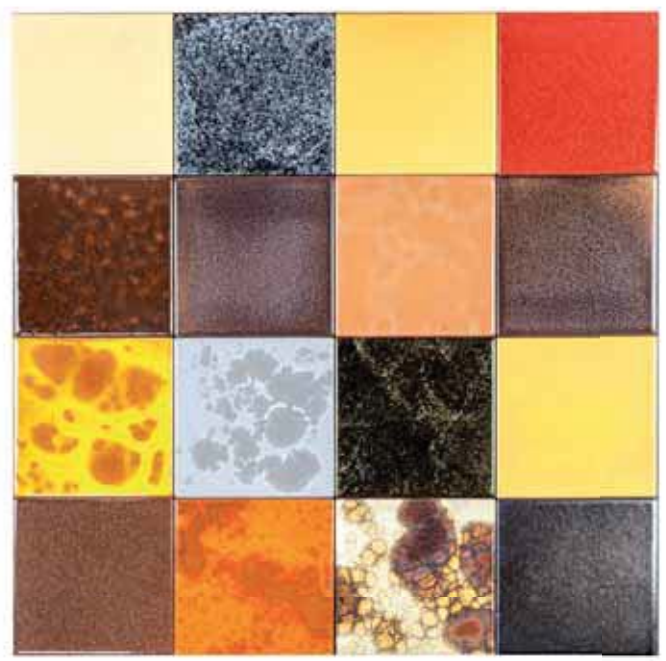
## #PACKING-LIST

formato size	pannello panel	num. pannelli num. panels	mq-scat. sqm-box	kg-scat. kg-box
10x10 cm	40x40	6	0,96	15
10x30 cm				

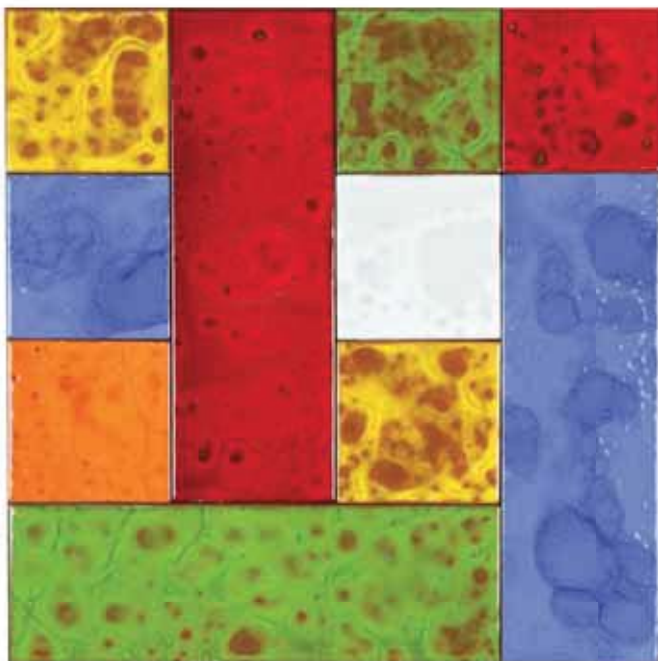




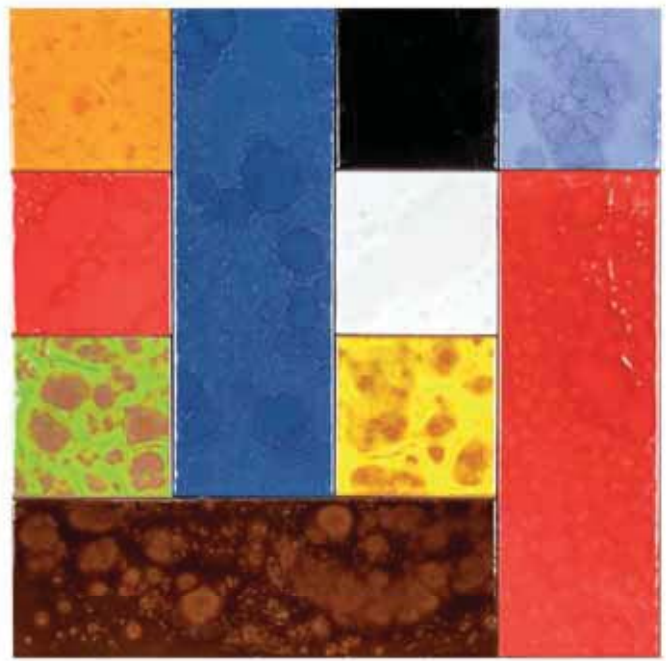
cod. PA 5  
marrone



cod. PA 6  
arti sti co

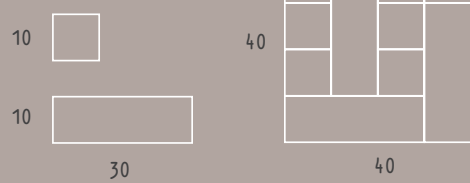


cod. PA 7  
wow

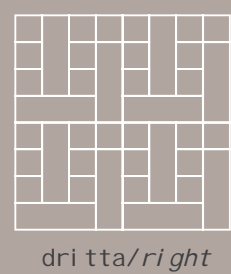


cod. PA 8  
doubl ewow

#FORMATO/SIZE



#POSA/LAYING



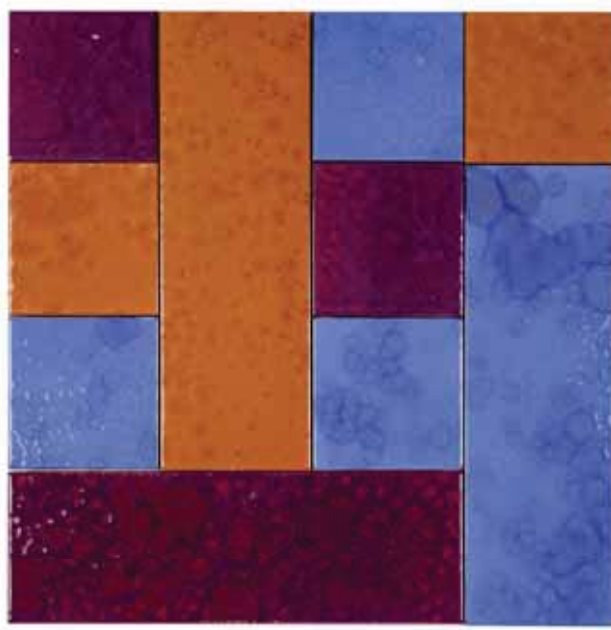
dri tta/ri ght

# #PATCHWORK

---



cod. PA 9  
bl u/azzurro



cod. PA 10  
fashi on



cod. PA 11  
vi ol a/bordeaux

## #DESIGN

studio D. R. I. H. F.

## #PRODUZIONE/PRODUCTION

artigianale  
*handmade*

## #MATERIALE/MATERIAL

biscotto meccanico smaltato a mano  
*mechanical handmade mould glazed*

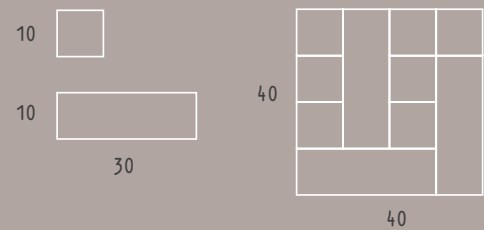
## #SPESSORE/THICKNESS

1 cm nominale / *nominal*

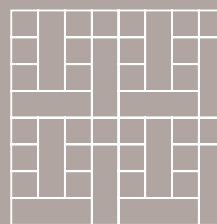
## #PACKING-LIST

formato <i>size</i>	10x10 cm ----- 10x30 cm
pannello <i>panel</i>	40x40
num. pannelli <i>num. panels</i>	6
mq-scat. <i>sqm-box</i>	0,96
kg-scat. <i>kg-box</i>	15

## #FORMATO/SIZE



## #POSA/LAYING



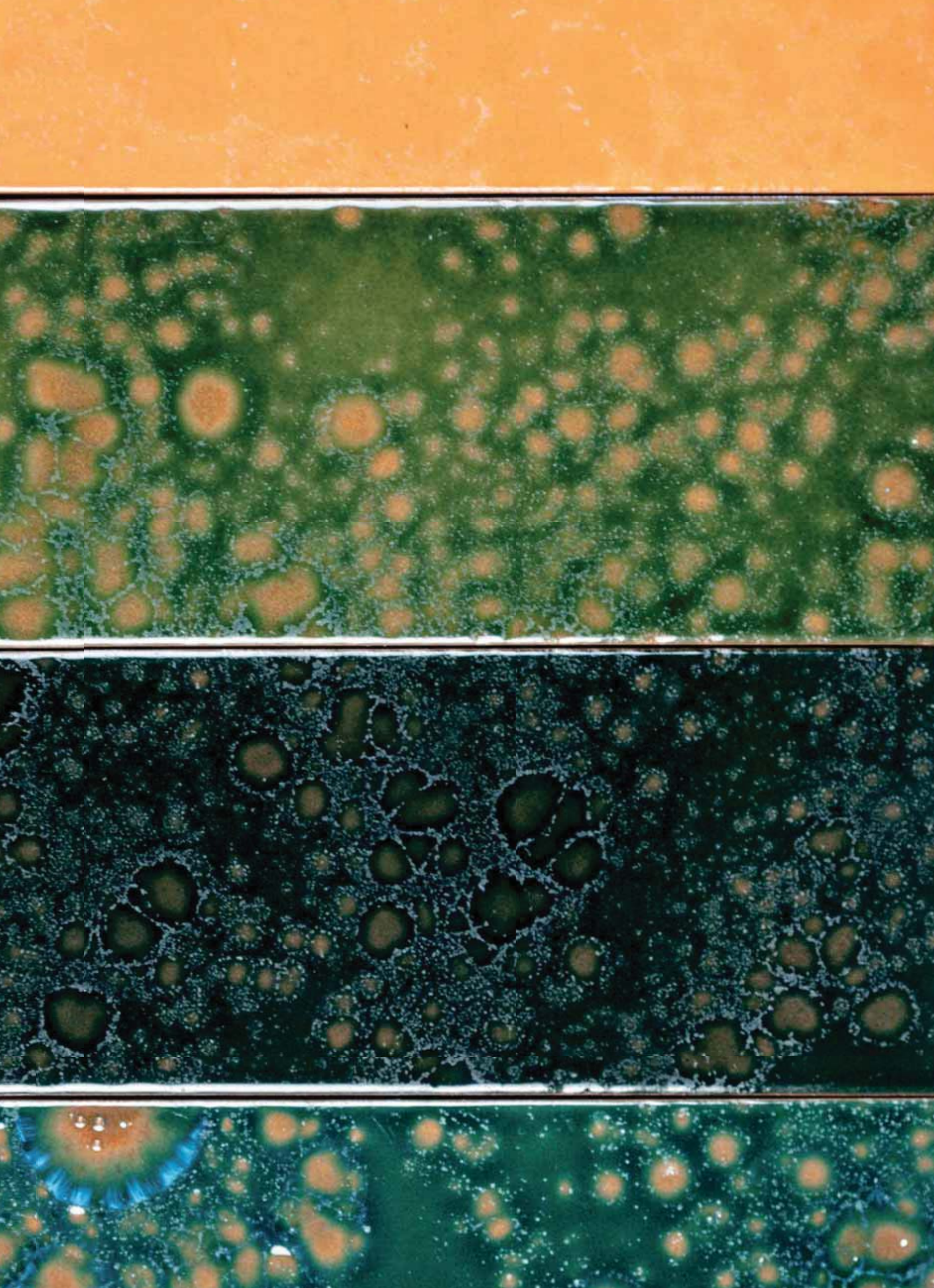
*dritta/right*

# FUSION BATLLÒ

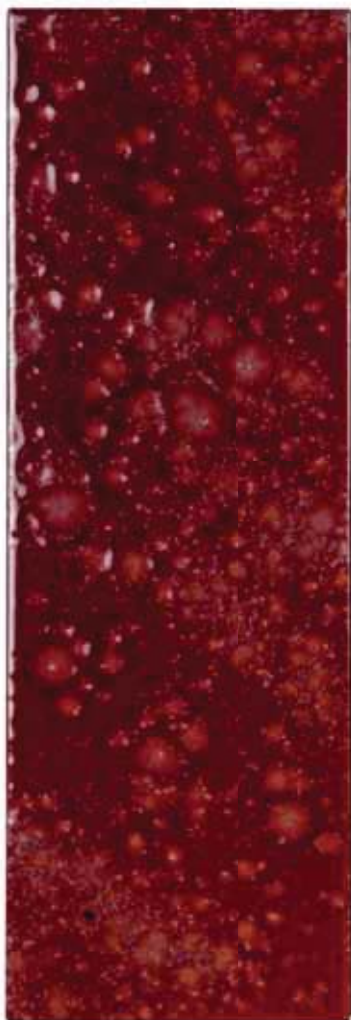
È un progetto nato dall'analisi minuziosa della facciata esterna di Casa Batllò del l'architetto spagnolo Antoni Gaudì. Si concretizza l'idea creativa creando una ceramica intensa, colorata e dalla superficie e tri dimensionale realizzata dalla fusione tra cristallina e smalto in un percorso ceramico inedito che rende profonda e luminosa la struttura ceramica.

*It is a project that starts from the meticulous analysis of the external facade of Casa Batllò, by the Spanish architect Antoni Gaudì. It materializes itself into an intense, colourful ceramic. Its three-dimensional surface is realized from the fusion between crystalline and enamel, in a unprecedented journey that makes the ceramic structure deep and radiant.*

Studio D.R.I.H.F.



# #FUSION BATLLÒ



cod. FB 1  
bordeaux



cod. FB 2  
rosso



cod. FB 3  
bi anco



cod. FB 4  
gri gio

#DESIGN: studio D. R. I. H. F.

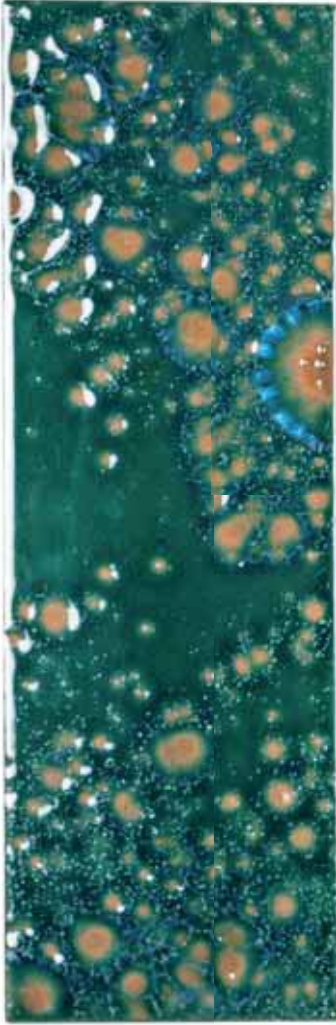
#PRODUZIONE/PRODUCTION: artigianale / handmade

#MATERIALE/MATERIAL: biscotto meccanico smaltato a mano / mechanical handmade glazed

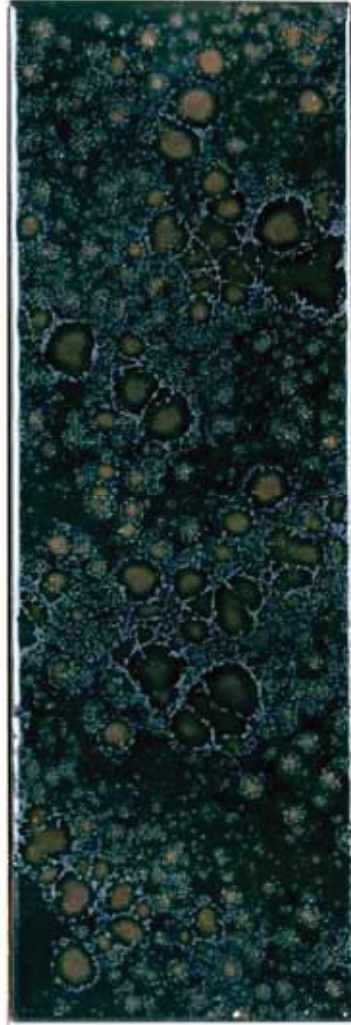
#SPESSORE/THICKNESS: 1 cm nominal / nominal

## #PACKING-LIST

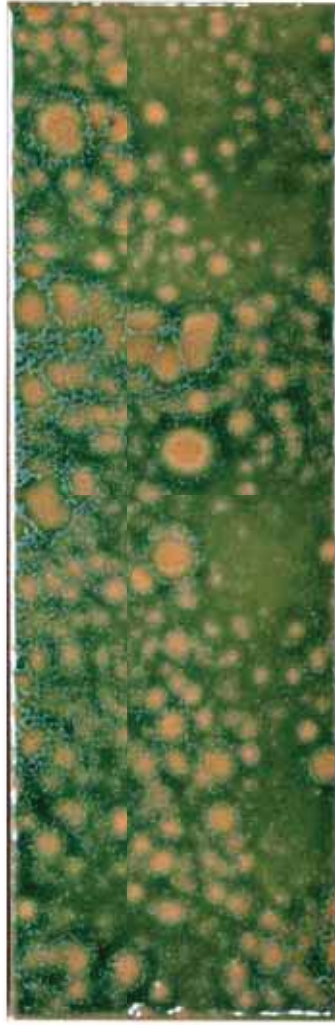
formato size	pz-mq pcs-sqm	pz-scat. pcs-box	mq-scat. sqm-box	kg-scat. kg-box
10x10 cm	100	120	1,20	19
10x30 cm	34	38	1,14	18



cod. FB 5  
verde



cod. FB 6  
verde scuro

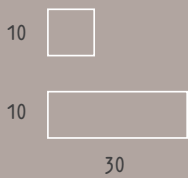


cod. FB 7  
verde muschio

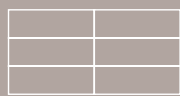


cod. FB 8  
sabbia

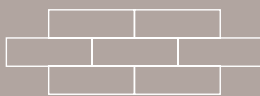
#FORMATO/SIZE



#POSA/LAYING



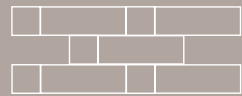
dritta/right



sfalata/offset

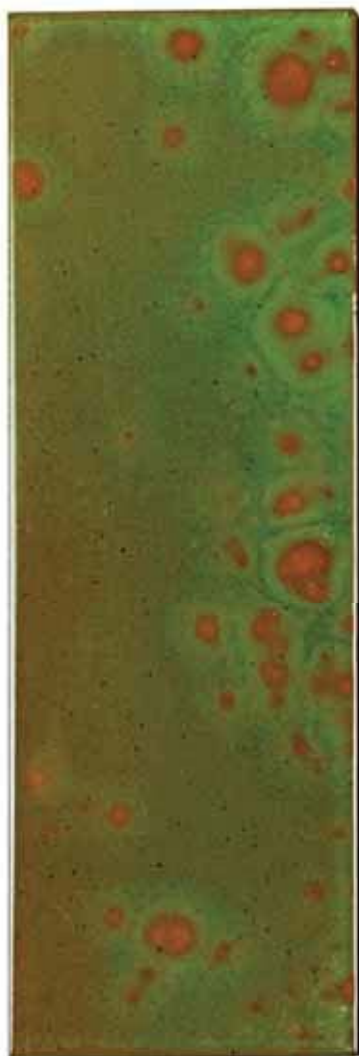


dritta/right



al ternata/al ternate

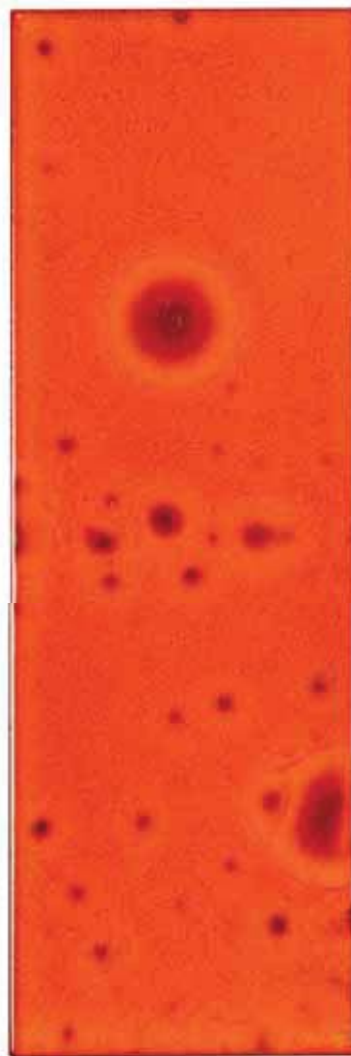
# #FUSION BATLLÒ



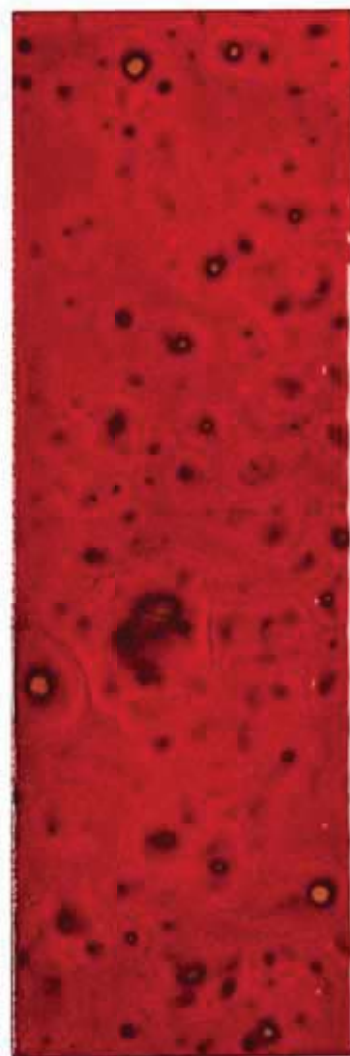
cod. FB 9  
verde effct



cod. FB 10  
giallo effect



cod. FB 11  
arancio effect



cod. FB 12  
rosso effect

#DESIGN: studio D. R. I. H. F.

#PRODUZIONE/PRODUCTION: artigianale / handmade

#MATERIALE/MATERIAL: biscotto meccanico smaltato a mano / mechanical handmade mould glazed

#SPESSORE/THICKNESS: 1 cm nominale / nominal

## #PACKING-LIST

formato size	pz-mq pcs-sqm	pz-scat. pcs-box	mq-scat. sqm-box	kg-scat. kg-box
10x10 cm	100	120	1,20	19
10x30 cm	34	38	1,14	18

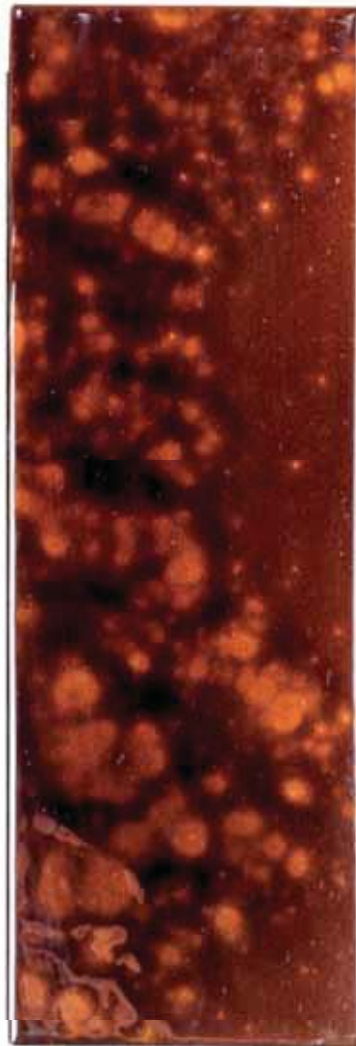




-----  
cod. FB 13  
avorio



-----  
cod. FB 14  
terra

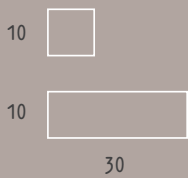


-----  
cod. FB 15  
marrone

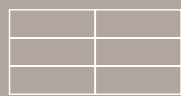


-----  
cod. FB 16  
nero

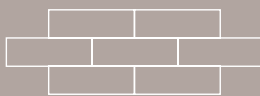
#FORMATO/SIZE



#POSA/LAYING



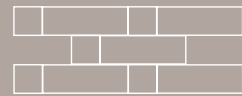
dri tta/*right*



sfal sata/*offset*

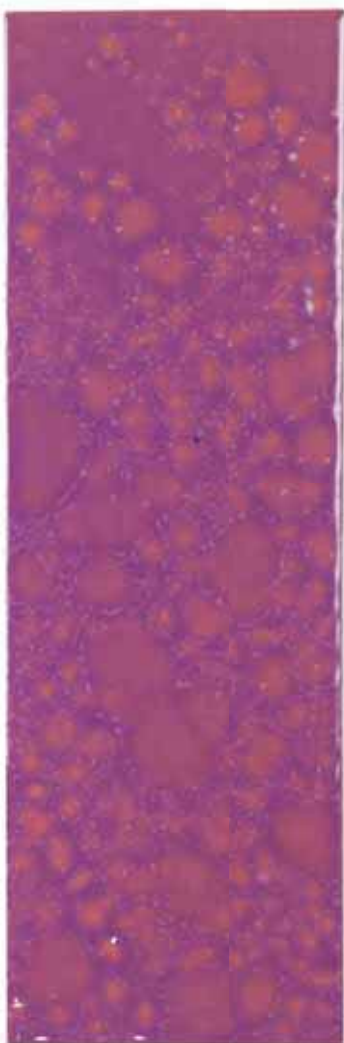


dri tta/*right*



al ternata/*al ternate*

# #FUSION BATLLÒ



cod. FB 17  
viola



cod. FB 18  
bl u scuro



cod. FB 19  
bl u



cod. FB 20  
azzurro

#DESIGN: studio D. R. I. H. F.

#PRODUZIONE/PRODUCTION: artigianale / handmade

#MATERIALE/MATERIAL: biscotto meccanico smaltato a mano / mechanical handmade mould glazed

#SPESSORE/THICKNESS: 1 cm nominale / nominal

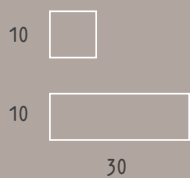
## #PACKING-LIST

formato size	pz-mq pcs-sqm	pz-scat. pcs-box	mq-scat. sqm-box	kg-scat. kg-box
10x10 cm	100	120	1,20	19
10x30 cm	34	38	1,14	18

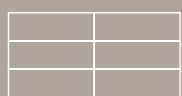


#azzurro

#FORMATO/SIZE



#POSA/LAYING



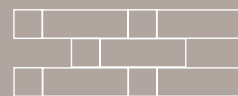
*dritta/right*



*sfalata/offset*



*dritta/right*



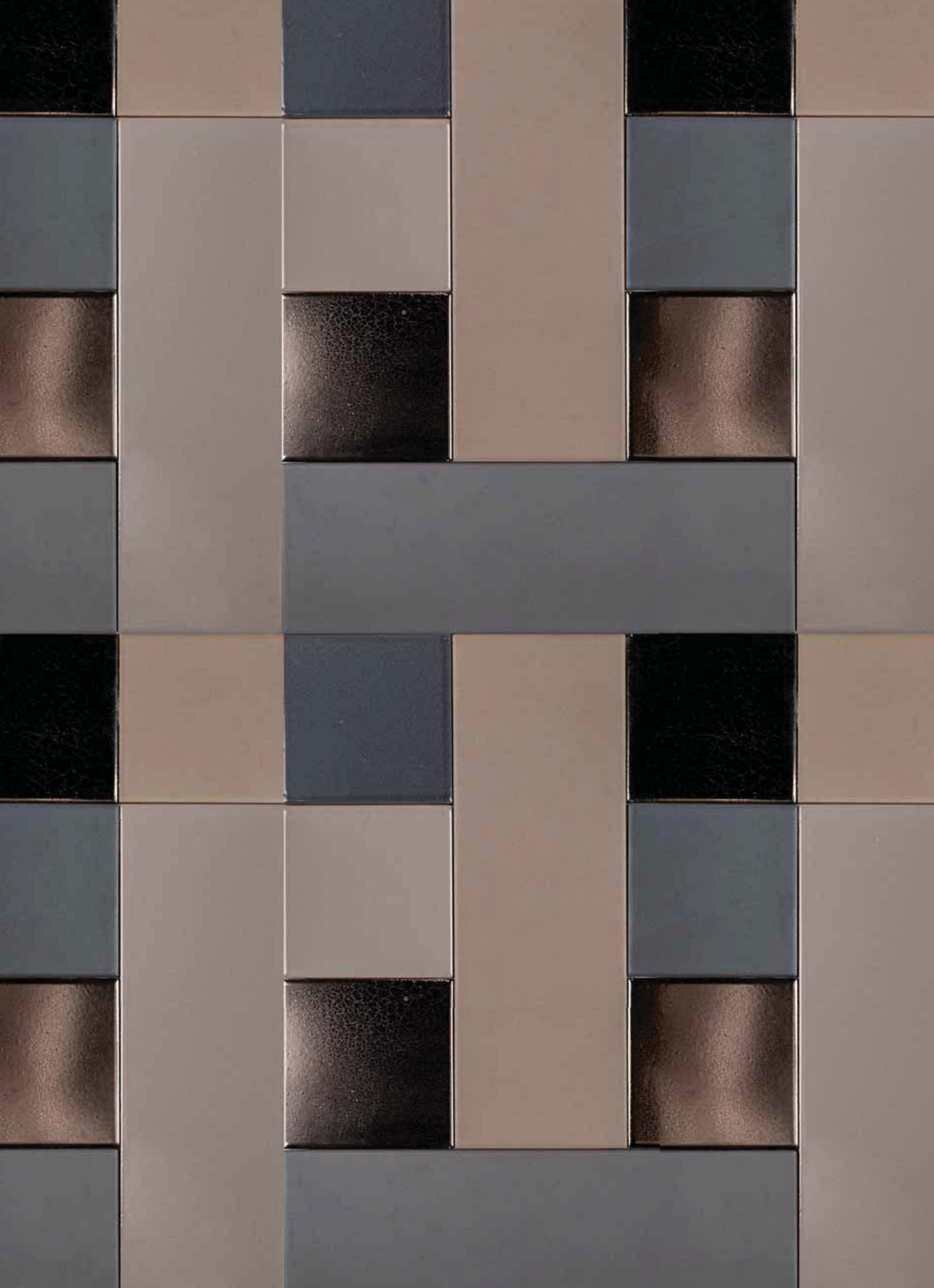
*al ternata/al ternate*

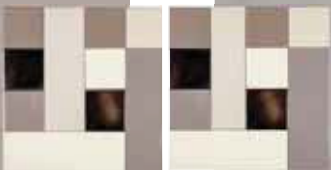
# PATCHWORK MO. DE.

Seguendo la riflessione progettuale di Patchwork, come concetti e contenuti, MO. DE. nasce con la filosofia del l'ente a cromia fissa. L'intento è stato quello di creare una Patchwork minimal e ed elegante.

*Following the design of the Patchwork Collection in regards of concept and content, MO. DE. Was created having in mind the philosophy of plain colours. The intent was to create a minimal and elegant patchwork.*

Studio D.R.I.H.F.





#patchwork #mo. de. #i nteri or #desi gn #mosai c #el egant

Studio D.R.I.H.F.



#nocciola

# #PATCHWORK

#MO.DE.



cod. PM 1  
panna



cod. PM 2  
nocciola

#DESIGN: studio D. R. I. H. F.

#PRODUZIONE/PRODUCTION: artigianale / handmade

#MATERIALE/MATERIAL: biscotto meccanico smaltato a mano / mechanical handmade glazed

#SPESSORE/THICKNESS: 1 cm nominale / nominal

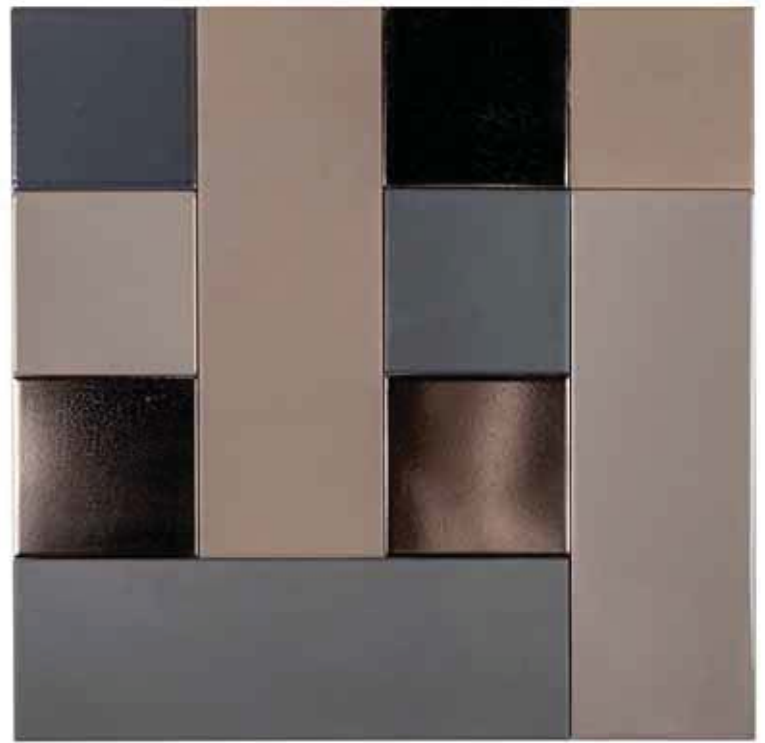
## #PACKING-LIST

formato size	pannello panel	num. pannelli num. panels	mq-scat. sqm-box	kg-scat. kg-box
10x10 cm	40x40	6	0,96	15



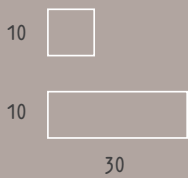


cod. PM 3 .....  
liquirizia

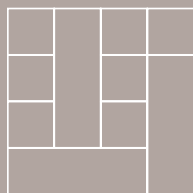


cod. PM 4 .....  
bacio

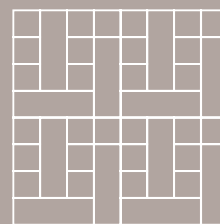
#FORMATO/SIZE



40



#POSA/LAYING



dri tta/ri ght

# #NEUTRA

#OPACA #MATT



cod. NO 1  
bi anco



cod. NO 2  
avorio



cod. NO 3  
nocciola



cod. NO 4  
fumo



cod. NO 5  
cenere

#DESIGN: studio D. R. I. H. F.

#PRODUZIONE/PRODUCTION: artigianale / handmade

#MATERIALE/MATERIAL: biscotto meccanico smaltato a mano / mechanical handmade glazed

#SPESSORE/THICKNESS: 1 cm nominale / nominal

## #PACKING-LIST

formato size	pz-mq pcs-sqm	pz-scat. pcs-box	mq-scat. sqm-box	kg-scat. kg-box
10x10 cm	100	120	1,20	19
10x30 cm	34	38	1,14	18

# #NEUTRA

#LUCIDA #POLISH



cod. NL 1  
bi anco

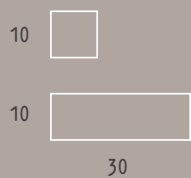
cod. NL 2  
avorio

cod. NL 3  
nocciola

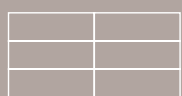
cod. NL 4  
fumo

cod. NL 5  
cenere

## #FORMATO/SIZE



## #POSA/LAYING



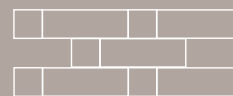
dri tta/*right*



sfal sata/*offset*



dri tta/*right*



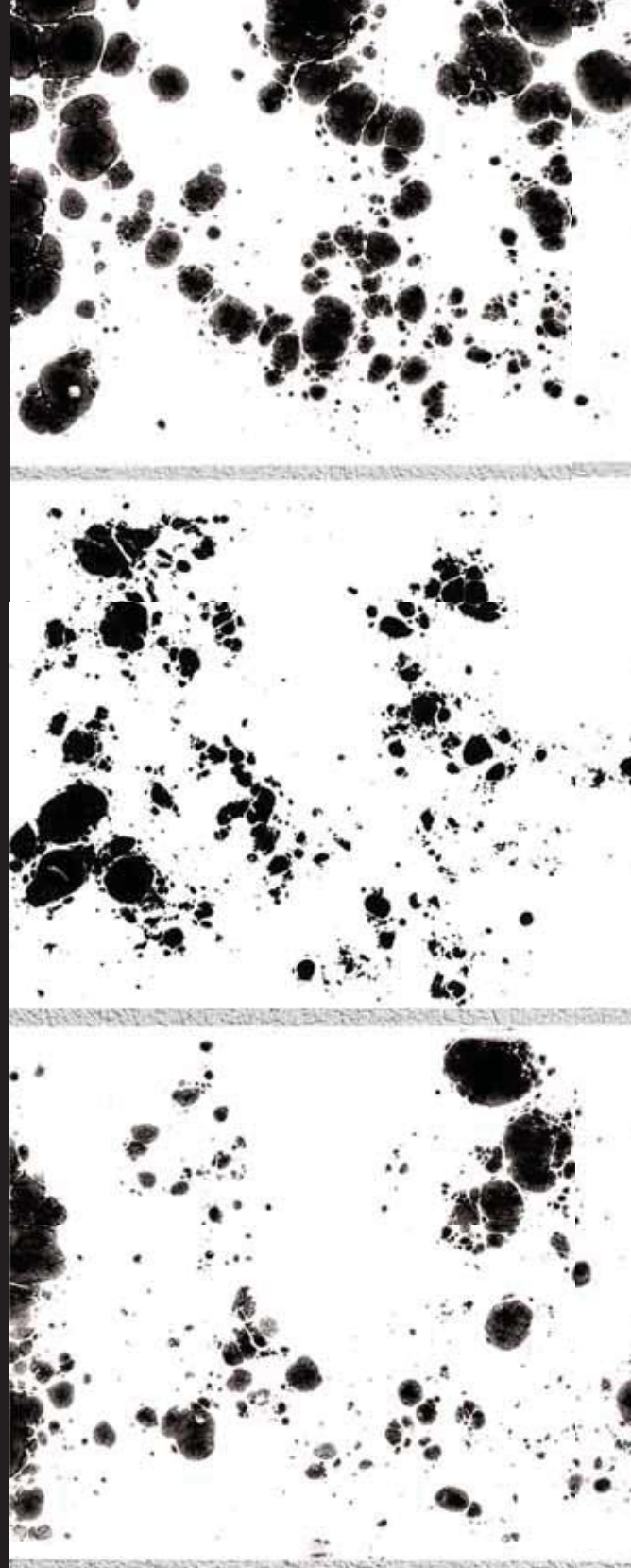
al ternata/*al ternate*

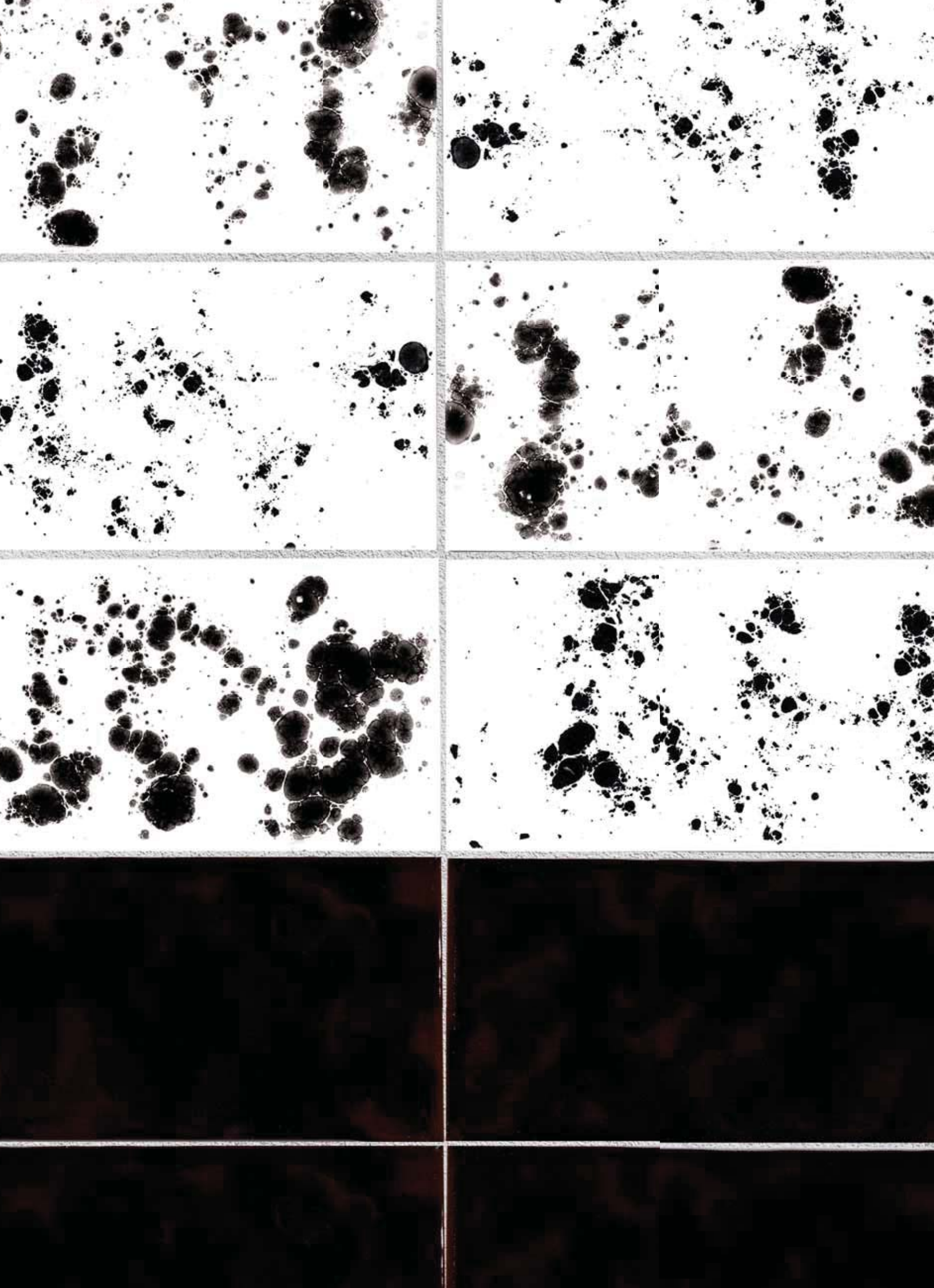
# INCHIOSTRO SIMPATICO

Il nostro percorso creativo esplode in un desiderio di comunione spontanea, immediata ed istintiva. Una fantasia primitiva ed innata. La ceramica bianca, la smaltatura a secco, il dolce movimento dello smalto immacolato, sono la base ideale per incontrare il colore con impulso puerile. L'inchiostro colorato crea una particolare sensazione giocosa e simpatica diventando un elemento di rottura, ma di moderno abbinamento ad elementi di arredo dai cromatismi minimali.

*Our creative journey explodes into a desire for spontaneous, immediate and instinctive communion. A spontaneous and primitive fantasy. The white ceramic, the dry glazing, the soft motion of the spotless enamel are the perfect base to meet the color with a childish impulse. The colorful ink creates a special playful and happy feeling becoming a breaking element, but at the same time a combination of modern interior items with minimal colors.*

Studio D.R.I.H.F.







**PANTONE**  
UNIVERSE™  
268

**PANTONE**  
UNIVERSE™  
268

#rosso



#inchiostrosimpatico #interior #design #project #art #modern

Studio D.R.I.H.F.

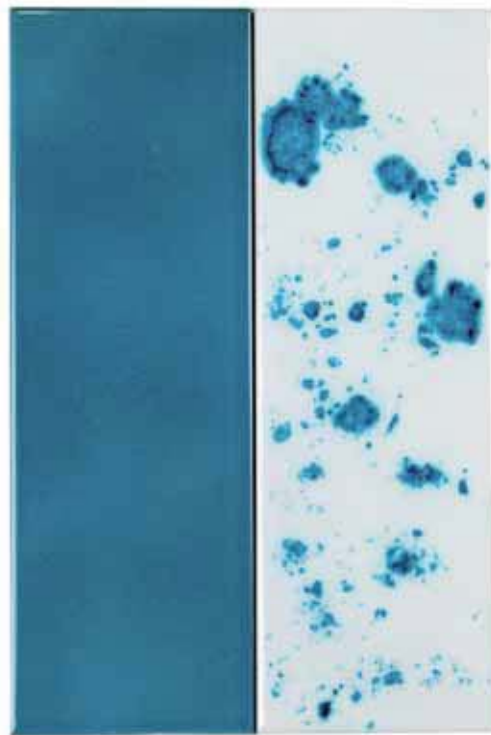
# #INCHIOSTROSIMPATICO



cod. IS 1  
verde chi aro

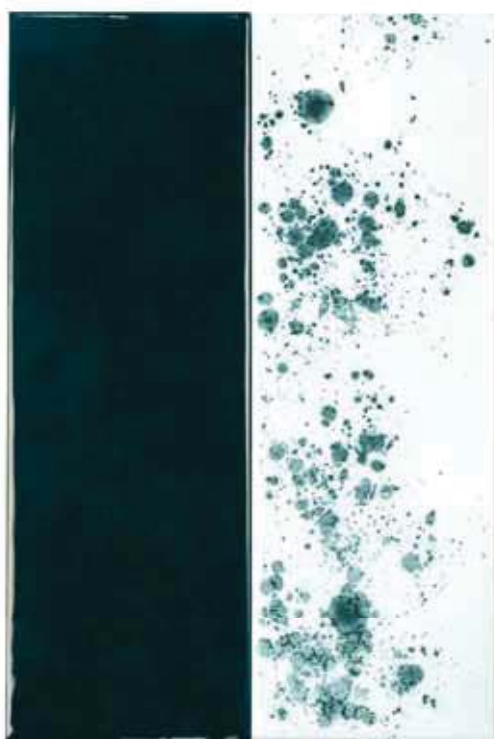
cod. IS 1D  
verde chi aro

cod. IS SB  
bi anco



cod. IS 2  
azzurro mare

cod. IS 2D  
azzurro mare



cod. IS 3  
verde scuro

cod. IS 3D  
verde scuro



cod. IS 4  
bl u

cod. IS 4D  
bl u

#DESIGN: studio D. R. I. H. F.

#PRODUZIONE/PRODUCTION: artigianale / handmade

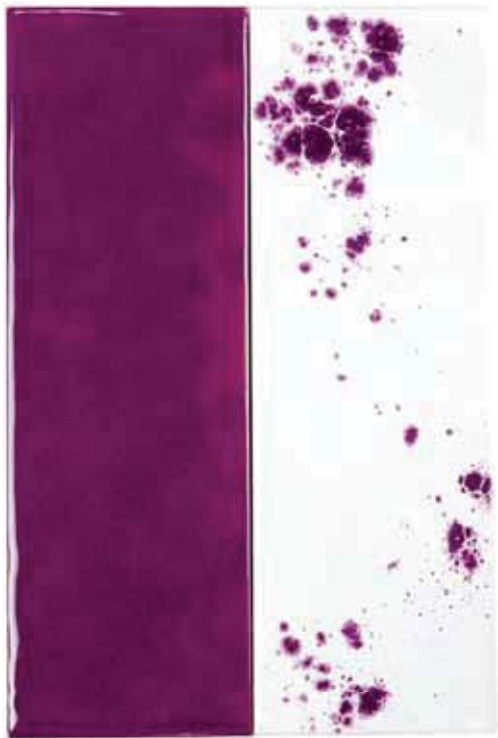
#MATERIALE/MATERIAL: biscotto meccanico smaltato a mano / mechanical handmade mould glazed

#SPESSORE/THICKNESS: 1 cm nominale / nominal

## #PACKING-LIST

formato size	pz-mq pcs-sqm	pz-scat. pcs-box	mq-scat. sqm-box	kg-scat. kg-box
10x10 cm	100	120	1,20	19
10x30 cm	34	38	1,14	18





cod. IS 5  
vi ol a



cod. IS 5D  
vi ol a



cod. IS 6  
bordeaux



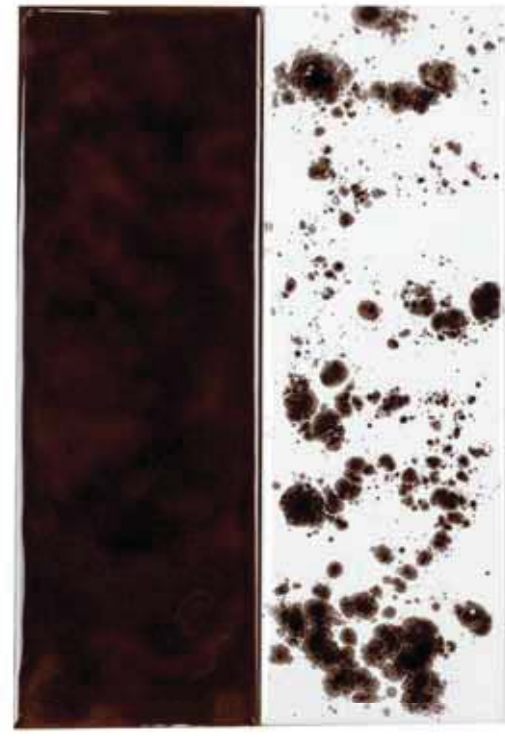
cod. IS 6D  
bordeaux



cod. IS 7  
nero



cod. IS 7D  
nero

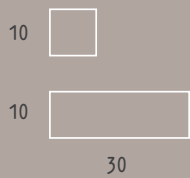


cod. IS 8  
bruno

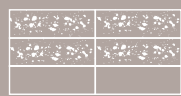


cod. IS 8D  
bruno

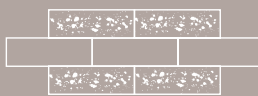
#FORMATO/SIZE



#POSA/LAYING



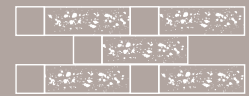
dri tta/*right*



sfal sata/*offset*



dri tta/*right*



al ternata/*al ternate*

#ARTDIRECTION

#GRAPHICDESIGN

#PHOTOGRAPHY

I AM. Communication Design

www.i-am-design.it

#PRINT

Grafiche Vecchi

#DESIGN

Dani lo Ramazzotti

Studio D. R. I. H. F.

© copyright

Gruppo Ceramico Cantoia

All rights reserved.

Reproduction of this image

is prohibited.

**DANILO RAMAZZOTTI®**  
ITALIANHOUSEFLOOR

is a brand of Gruppo Ceramico Cantoia s.r.l.

via Novara, 41 - 28010 Vaprio d'Agogna (NO) - Italy

Tel: +39 0321. 966948 - Fax: +39 0321. 966945

info@danioloramazzotti.com - www.danioloramazzotti.com



dal 1956



---

L'Azienda si riserva la facoltà di modificare in qualunque momento le informazioni e le caratteristiche tecniche illustrate nel presente catalogo, che non sono comunque da ritenersi legalmente vincolanti. Pesi, colori e misure possono subire variazioni tipiche del particolare processo di cottura del materiale ceramico. I colori e le caratteristiche estetiche dei prodotti sono quanto più possibili vicini a quelli reali, nei limiti consentiti dai processi di stampa. Tutti i formati si intendono nominali.

*The company reserves the right, at any time and without prior notice, to change the information and technical characteristics given in this catalog, none of which are to be considered legally binding. Weights, colors and dimensions are subject to the normal variations resulting from the ceramic firing process. Within the limits of printed material, the colors and aesthetic features of the products illustrated correspond as closely as possible to those of the actual products. All sizes are to be considered nominal.*



